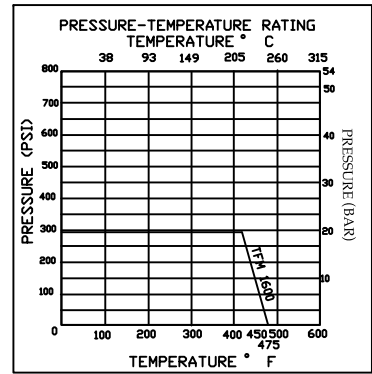
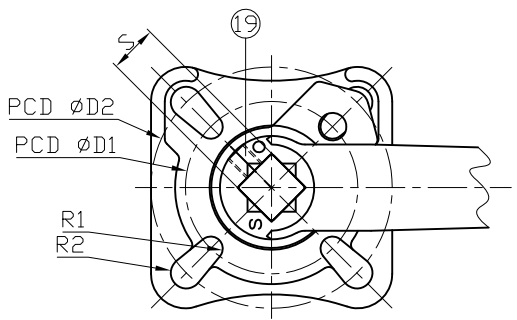
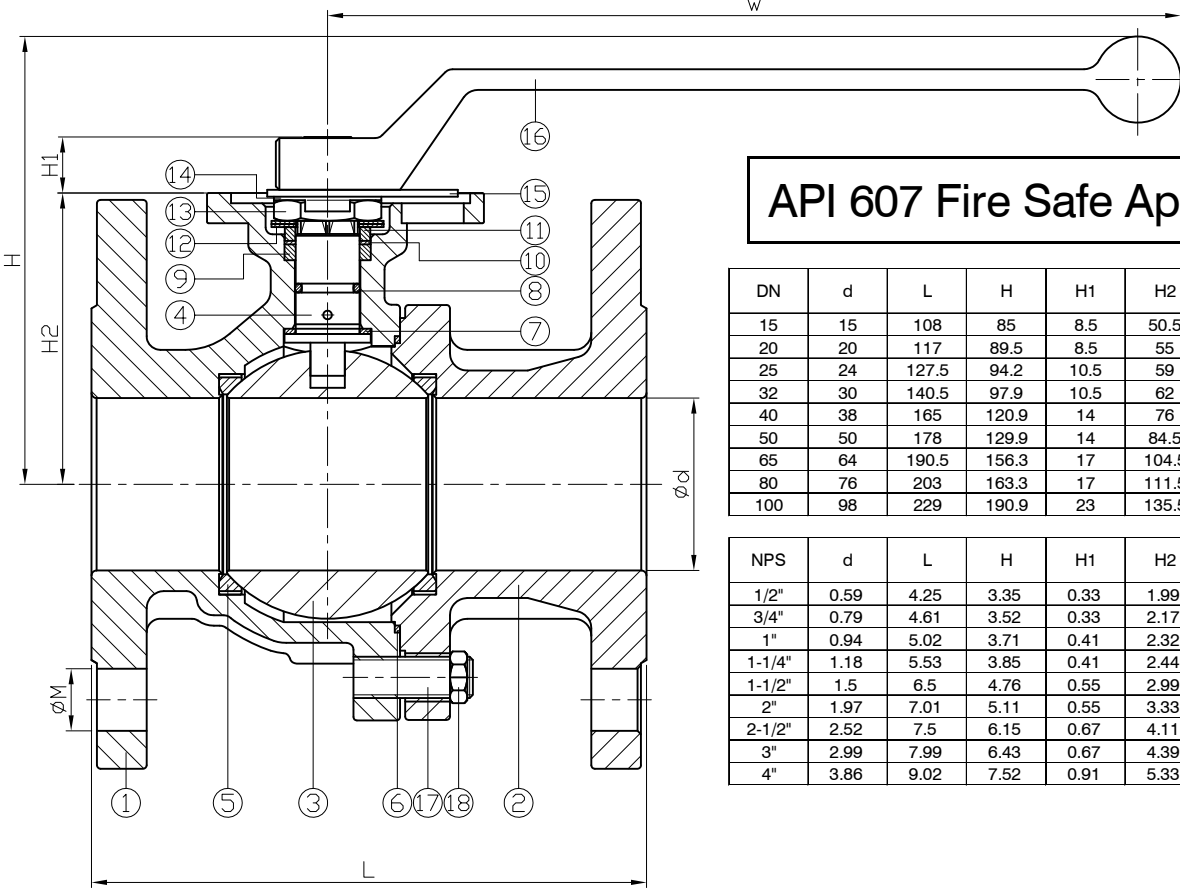


Ra	0.2	▽▽▽	JIS
	1.6	▽▽	
	6.3	▽	
	25	▽	
GENERAL TOLERANCE	± 0.1 ± 0.2 ± 0.3 ± 0.5 ± 0.8		



ITEM	PARTS	MATERIAL
1	BODY	ASTM A216-WCB
2	CAP	
3	BALL	ASTM A351-CF8M
4	STEM	ASTM A276-316
5	SEAT	TFM 1600
6	SEAL	GRAPHITE
7	THRUST WASHER	CTFE
8	O-RING	VITON
9	PACKING A	GRAPHITE
10	PACKING B	CTFE
11	GLAND RING	AISI 304
12	BELLEVILLE WASHER	AISI 301
13	NUT	AISI 304
14	LOCK WASHER	
15	STOPPER	
16	HANDLE	
17	STUD	
18	NUT	
19	SOCKET SET SCREW	



API 607 Fire Safe Approved

DN	d	L	H	H1	H2	W	S	D1	D2	R1	R2	M	Torque (N-M)		Weight (kg)
													Breakaway	Action	
15	15	108	85	8.5	50.5	190	9	36	42	2.75	2.75	16	5.2	3	1.7
20	20	117	89.5	8.5	55	190	9	36	42	2.75	2.75	16	8	4.7	2.1
25	24	127.5	94.2	10.5	59	190	11	42	50	2.75	3.5	16	12.5	9	3.2
32	30	140.5	97.9	10.5	62	190	11	42	50	2.75	3.5	16	14	11	3.7
40	38	165	120.9	14	76	235	14	50	70	3.5	4.5	16	24.5	18	6
50	50	178	129.9	14	84.5	235	14	50	70	3.5	4.5	19	32	23	8
65	64	190.5	156.3	17	104.5	325	17	70	102	4.5	5.5	19	38	27	14.5
80	76	203	163.3	17	111.5	325	17	70	102	4.5	5.5	19	45	30	18.2
100	98	229	190.9	23	135.5	325	22	102	125	5.5	6.5	19	55	37	29

NPS	d	L	H	H1	H2	W	S	D1	D2	R1	R2	M	Torque (in-lb)		Weight (lb)
													Breakaway	Action	
1/2"	0.59	4.25	3.35	0.33	1.99	7.48	0.35	1.42	1.65	0.11	0.11	0.63	46	26.6	3.7
3/4"	0.79	4.61	3.52	0.33	2.17	7.48	0.35	1.42	1.65	0.11	0.11	0.63	70.8	41.6	4.6
1"	0.94	5.02	3.71	0.41	2.32	7.48	0.43	1.65	1.97	0.11	0.14	0.63	110.6	79.7	7.1
1-1/4"	1.18	5.53	3.85	0.41	2.44	7.48	0.43	1.65	1.97	0.11	0.14	0.63	123.9	97.4	8.2
1-1/2"	1.5	6.5	4.76	0.55	2.99	9.25	0.55	1.97	2.76	0.14	0.18	0.63	216.8	159.3	13.2
2"	1.97	7.01	5.11	0.55	3.33	9.25	0.55	1.97	2.76	0.14	0.18	0.75	283.2	203.6	17.6
2-1/2"	2.52	7.5	6.15	0.67	4.11	12.8	0.67	2.76	4.02	0.18	0.22	0.75	336.3	239	32
3"	2.99	7.99	6.43	0.67	4.39	12.8	0.67	2.76	4.02	0.18	0.22	0.75	398.3	265.5	40.2
4"	3.86	9.02	7.52	0.91	5.33	12.8	0.87	4.02	4.92	0.22	0.26	0.75	486.8	327.5	63.9

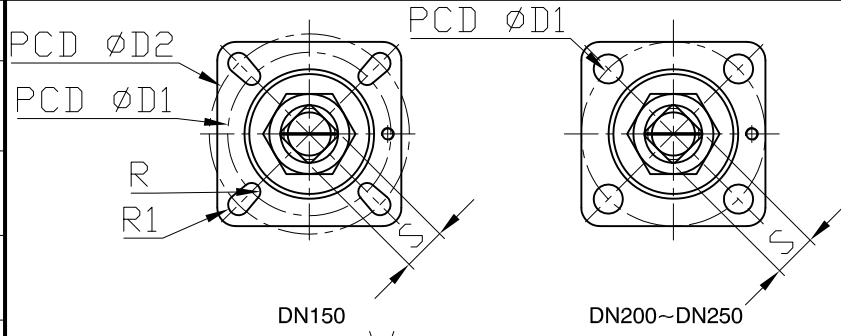
Ohio Valve Company  
4061 Clough Woods  
Tel: 513-752-5600  
E-mail: sales@ohiovalve.com  
Drive Batavia, OH 45103  
www.ohiovalve.com  
Fax: 513-752-8267



CHECK BY	DRAWING BY	DATE	SPECIFICATION	2-PC Flanged End Ball Valve Class 150
	<i>Sammy</i>	Nov.27.2014	MATERIAL	WCB
			PROCESS/Nr.	
			UNIT / SCALE	mm

△			
△			
△			
Revise	Description	Date	Approve
DRAWING NO.		<b>256F-150DM</b>	

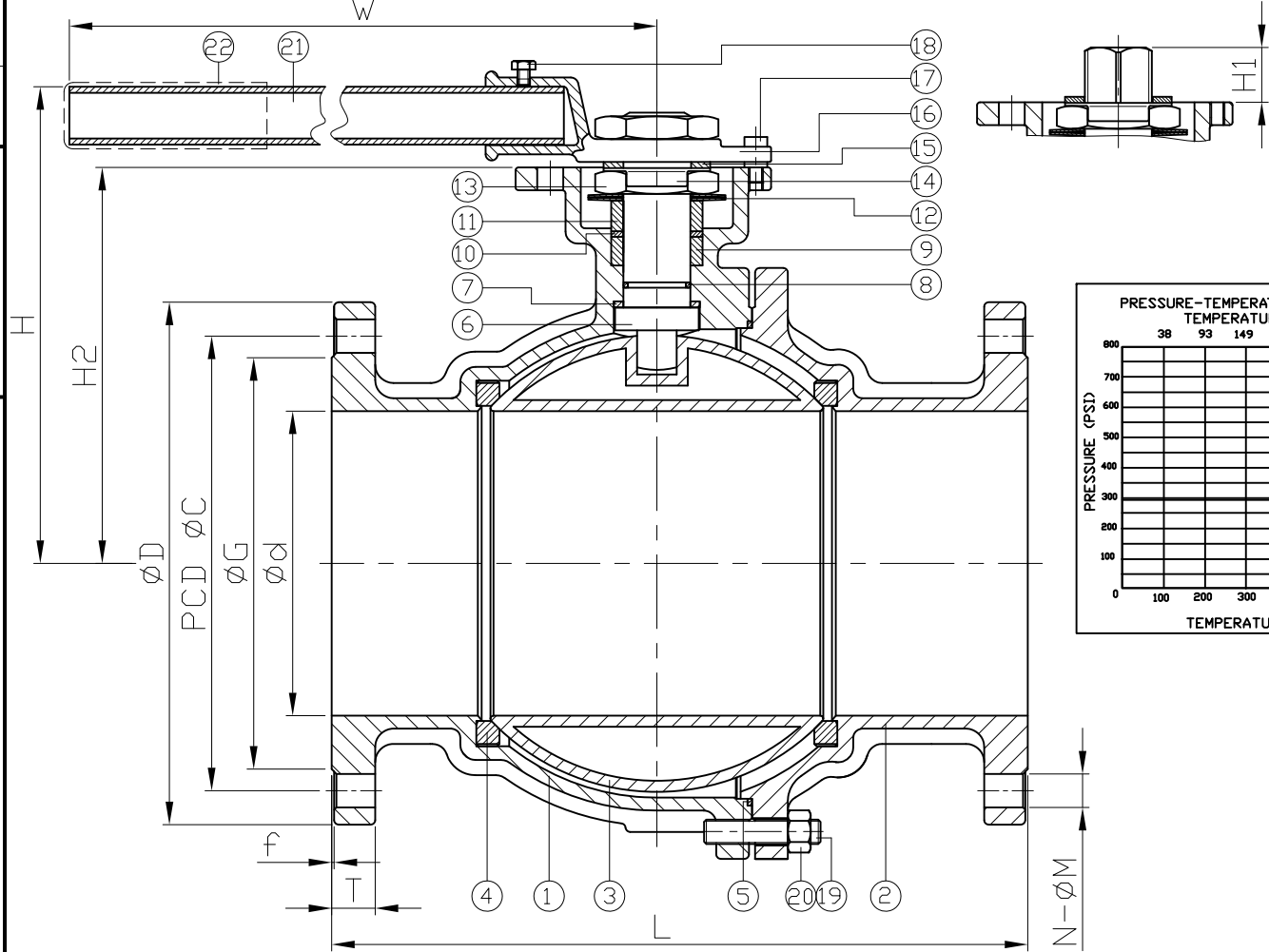
Ra	JIS
0.2	▽▽▽
1.6	▽▽
6.3	▽
25	▽
±0.1	±0.2
±0.2	±0.3
±0.3	±0.5
±0.5	±0.8
0.5~5	321~1000
6~30	121~320
31~120	321~1000
121~320	
321~1000	
GENERAL TOLERANCE	



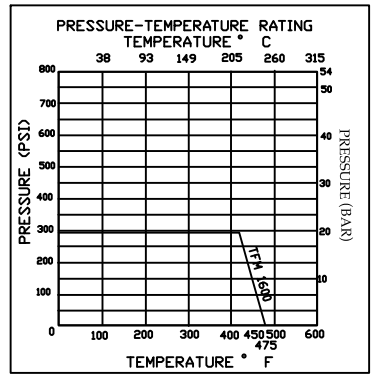
DN	d	G	C	D	L	H	H1	H2	W	T	f	S	D1	D2	R	R1	N	M	Torque (N-m)		Weight (kg)
																			Breakaway	Action	
125	125	186	216	254	356	232	28	180	743	23.9	1.6	27	102	125	5.5	6.5	8	22	160	96	40.3
150	150	216	241.5	279	394	230	27.5	201	743	25.4	1.6	27	102	125	5.5	6.5	8	22.4	250	170	52
200	200	270	298.5	343	457	312	36	259	840	28.6	1.6	36	140	-	8.5	-	8	22.4	470	280	88
250	250	324	362	406	533	350	36	295	1040	30.2	1.6	36	140	-	8.5	-	12	25.4	750	532	143

NPS	d	G	C	D	L	H	H1	H2	W	T	f	S	D1	D2	R	R1	N	M	Torque (in-lb)		Weight (lb)
																			Breakaway	Action	
5"	4.92	7.32	8.5	10	14.02	9.13	1.1	7.09	29.25	0.94	0.06	1.06	4.02	4.92	0.22	0.26	8	0.87	1416.1	849.7	88.8
6"	5.91	8.5	9.51	10.98	15.51	9.06	1.08	7.91	29.25	1	0.06	1.06	4.02	4.92	0.22	0.26	8	0.88	2212.7	1504.6	114.6
8"	7.87	10.63	11.75	13.5	17.99	12.28	1.42	10.2	33.07	1.13	0.06	1.42	5.51	-	0.33	-	8	0.88	4159.8	2478.2	194
10"	9.84	12.76	14.25	15.98	20.98	13.78	1.42	11.61	40.94	1.19	0.06	1.42	5.51	-	0.33	-	12	1	6638	4708.6	315.3

unit:mm  
unit:in



API 607 Fire Safe Approved For 6"



ITEM	PARTS	MATERIAL
1	BODY	ASTM A216-WCB
2	CAP	
3	BALL	ASTM A240-316
4	SEAT	TFM 1600
5	SEAL	GRAPHITE
6	STEM	ASTM A276-316
7	THRUST WASHER	CTFE
8	O-RING	VITON
9	PACKING A	GRAPHITE
10	PACKING B	CTFE
11	GLAND RING	AISI 304
12	BELLEVILLE WASHER	AISI 301
13	STEM NUT	AISI 304
14	LOCK WASHER	
15	FLAT WASHER	
16	HANDLE HEAD	
17	STOP PIN	
18	BOLT	
19	STUD	
20	NUT	
21	STEEL TUBE	
22	HANDLE SLEEVE	

Ohio Valve Company  
4061 Clough Woods  
Tel:513-752-5600  
E-mail:sales@ohiovalve.com  
Drive Batavia,OH 45103  
www.ohiovalve.com  
Fax:513-752-8267



CHECK BY	DRAWING BY	DATE	SPECIFICATION	2-PC Flanged End Ball Valve Class 150
	<i>Sammy</i>	Nov.27.2014	MATERIAL	WCB
			PROCESS/Nr.	
			UNIT / SCALE	mm

△			
△			
△			
Revise	Description	Date	Approve
DRAWING NO. <b>256F-150DM</b>			